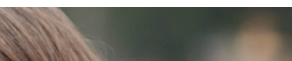


Fulfilled Expectations,
More Children

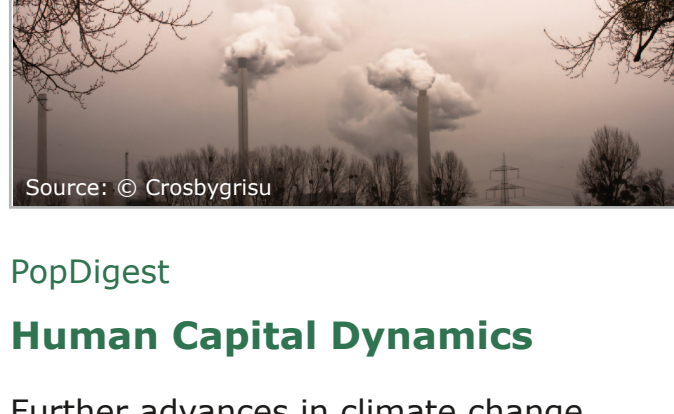


BLOG



Source: © Halpoint

Our Topics

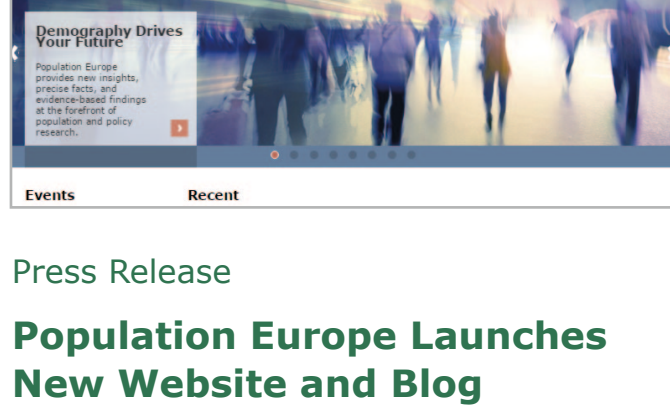


PopDigest

Human Capital Dynamics

Further advances in climate change research can actually contribute to a better understanding of not only the complex interrelationship between climate and socio-economic conditions of populations.

[Read more](#)



Press Release

Population Europe Launches New Website and Blog

Population Europe has a new website, and it's better than ever. As part of this relaunch, Population Europe also introduced a new blog Population & Policy Bites.

[Read more](#)



PopDigest

The Emergence Of A Care And Domestic Migrant Underclass

A new migrant underclass seems to be emerging in Spain and Sweden, where immigrant women working in domestic and care services live a similar situation marked by precariousness.

[Read more](#)



News

Mother's Educational Level and Single Motherhood

Comparing Spain and Italy: During the second half of the 20th century there was a positive relationship between single parenthood and the mother's educational level in Spain and Italy.

[Read more](#)

News

The Fiscal Cost of Refugee Immigration

The Example of Sweden - The world currently has more refugees and internally displaced persons than it has had since World War II. Yet the readiness of many wealthy countries to provide asylum to these refugees is waning.

[Read more](#)

Books & Reports

OECD Pensions at a Glance 2015

The 10-year anniversary edition of Pensions at a Glance highlights the pension reforms undertaken by OECD and G20 countries over the last two years.

[Read more](#)

PopDigest

Multiple Roles Pay Off

Women who restart their careers after caring for family are healthier in later life Maximising health in later life is one of the most important policy issues for the welfare regimes of ageing societies. At the same time, health outcomes in later life can only be fully understood when also taking into account past experiences.

[Read more](#)

Statement

Europe Can Benefit From the Refugee Stream

What demographic research can tell us about Europe's refugee crisis - an interview with Hill Kulu.

[Read more](#)

PopDigest

Highly Educated and Healthy

Currently people are living longer lives but not everyone reaches advanced age in good health. This is because health conditions vary among population groups and across territories, giving space to so-called health inequalities.

[Read more](#)

Discussion Paper

EU Civil Society and Demographic Change

This discussion paper is part of Population Europe's three-part discussion paper series, which provides in- depth insights into contemporary discussions among demographic experts from research, policy and civil society at the European level.

[Read more](#)

Event Review

Convergence and Divergence in Health and Life Expectancy in the Three Baltic Countries

On Friday, 30 October 2015, experts from science and policy met for Population Europe's event, co-organised with three universities (Kaunas University, University of Latvia, and Tallin University) in Latvia's capital city of Riga to discuss demographic challenges in the Baltic countries.

[Read more](#)

14-16
Jan. 16

Event

Economics, Health and Happiness

Individual well-being is under pressure nowadays as people are becoming increasingly exposed to many sources of stress. Changes in socio-demographic (i.e. population aging) and epidemiological trends (with the increase in chronic diseases), and changes in labor force participation patterns (especially for women), affect family and inter-personal relationships...

[Read more](#)

25
Jan. 16

Event

Population Europe Tandem Talk: Dublin revisited. Options for a European Approach to Asylum

The ongoing refugee crisis has put significant pressure on the Common European Asylum System (CEAS) and specifically on the so-called Dublin Regulation, which for the European Union established the criteria for assigning responsibilities to Member States when dealing with asylum seekers and refugees sint.

[Read more](#)

26
Jan. 16

Event

Intergenerational linkages in the family. How policies shape the organisation of caring and financial responsibilities for family

Third Annual FamiliesAndSocieties Stakeholder Seminar - Experts from research, policy and NGOs will discuss in a confidential atmosphere the most recent findings on topics such as how laws and policies shape gendered interdependencies in families.

[Read more](#)

3
Feb. 16

Event

Population Europe Webinar with Michaela Kreyenfeld: A Life Without Children

What are the determinants of a "life without children"? Are these trends going to sustain? Can and should governments counteract increasing childlessness? We invite you to discuss these and other questions with Professor Michaela Kreyenfeld, Professor of Sociology at the Hertie School of Governance in Berlin, Germany, in an exclusive webinar for Population Europe.

[Read more](#)

7-10
March 16

Event

Applied Panel Data Analysis

Panel data offer advantages for analyzing individual dynamics and identifying causal effects. This course will present methods that allow capitalizing on these advantages: fixed-effects methods and growth curve models

[Read more](#)

[All New News](#)

[All New Pop Digests](#)

[All New Events](#)



If you are interested in new publications, please check the section [books and reports](#) on our website.



If you are interested in career and study opportunities, please check the section [study & career](#).



Please inform us if you do not want to receive this quarterly newsletter. press@population-europe.eu

Imprint

Dr Harald Wilkoszewski
Head of the Information Centre

Population Europe | Brussels Office
Max Planck Institute for Demographic Research

Fon + 32 2250 1419
Fax + 32 2250 1420
E-Mail press@population-europe.eu

Secretariat + 49 30 2061 383 - 30

Population Europe was founded in 2009 and has been supported by the European Commission since January 2010. As a collaborative network it provides comprehensive knowledge, information, and insights into fundamental demographic trends and diverging population developments. This expertise is key to understanding the political, social, and economic developments of Europe in the 21st century.

This mail has been sent through the MPI for Demographic Research. Should you receive a mail that is apparently from a MPI user without this text displayed, then the address has most likely been faked. If you are uncertain about the validity of this message, please check the mail header or ask your system administrator for assistance.